



ControlTech
Automation

Absolute Solution
Process Automation...

LEVEL



TEMPERATURE



ANALYTICAL

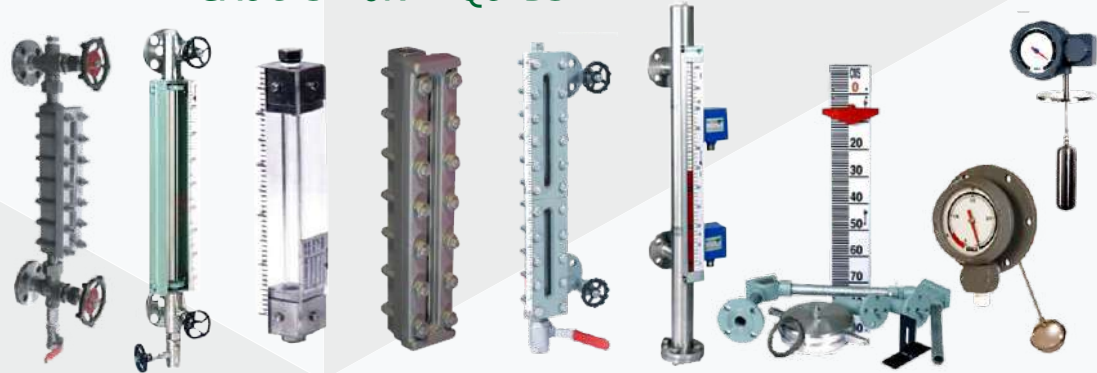


FLOW



LEVEL GAUGES FOR LIQUIDS

- Tubular
- Mini Tubular
- Transparent
- Reflex
- Magnetic Bicolor Flapper Follower Magnet Switching / Transmitting
- Float & Board
- Float Dial
- Magnetic Float Operated Dial etc...



LEVEL SWITCHES FOR LIQUIDS

- Float, Guided, Pivoted, Tilt, Bilge
- Displacer
- Conductivity
- Capacitance
- Diaphragm
- Vibrating Fork etc...



LEVEL SWITCHES FOR GRAINS & SOLIDS

- Paddle
- RF Admittance
- Vibrating, Fork, Rod Diamond Blade



ULTRASONIC & RADAR LEVEL CONTROL OF LIQUIDS & SOLIDS

- Ultrasonic (Non-Contact)
- Radar (TDR & FMCW)



TRANSMITTERS FOR LIQUIDS

- Float
- Capacitance
- Displacer LVDT
- Displacer Torque Tube
- Submersible
- Display Unit



WATER INGRESS DETECTION SYSTEM FOR BULK CARRIERS



EXTERNAL CHAMBERS FOR BUOYANCY & RADAR INSTRUMENTS

- Side Mounted
- Top Mounted





WAVETEK ELECTRONICS

Solutions Through Engineered Products



Integral with Flow Indicator/Totalizer

ELECTROMAGNETIC FLOW METERS



Insertion type



Paddle type



Flow Indicator / Totalizer

ANALYTICAL INSTRUMENTS



Online pH Meter



ORP Meter



Lab pH Meter



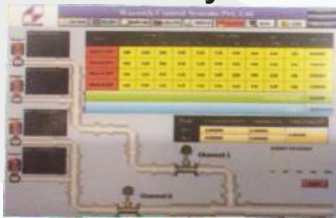
TDS Meter



Online Conductivity Meter

ON-Line Data Logging

SCADA System



Typical Data Logging Network Diagram



up to 250 various instruments



Flow Totalizer



pH



Conductivity



Flow Meter



ORP



Do2



Chlorine Meter



TDS

Off-Line Data Logging

Off-Line Data Logging (with Flash Drives) Model : FIT06-FD

The realtime readings are measured & stored in a USB flash-drive (Pen Drive). Inbuilt realtime clock provided.



Solution Through Engineered products...

EUREKA

ENGINEERING ENTERPRISES

TEMPERATURE SENSING SYSTEMS

THERMOCOUPLES - CU/CONST(T),FE/KO(E),CR/AL(K),NIKROSIL/NISIL(N),PT/PT RH-10%(S), 13%(R),30%(B)

Rigid & Flexible Constructions with Ceramic or Mineral insulation, in various Moc's and Configurations, with Epoxy Potted Termination, Quick Disconnect plugs and IP 65 & Gr IIA & IIB, Ex-proof Enclosures



RESISTANCE THERMOMETERS (RTD'S) - PT-100, 200, 500 & 1000 (DIN IEC 751)

Rigid & Flexible Constructions with Ceramic or Mineral insulation, in various Moc's and Configurations, with Epoxy Potted Termination, Quick Disconnect plugs and IP 65 & Gr IIA & IIB, Ex-proof Enclosures



THERMOWELLS - FABRICATED & BAR STOCK (PTC 19.3 TW - 2010 STANDARDS), WITH OPTION OF IBR APPROVED

Rigid & Flexible Constructions with Ceramic or Mineral insulation, in various Moc's and Configurations, with Epoxy Potted Termination, Quick Disconnect plugs and IP 65 & Gr IIA & IIB, Ex-proof Enclosures



TEMPERATURE INDICATORS

Panel Mount

Flame Proof

Big Display

Multi Channel

Portable



NON CONTACT PYROMETER



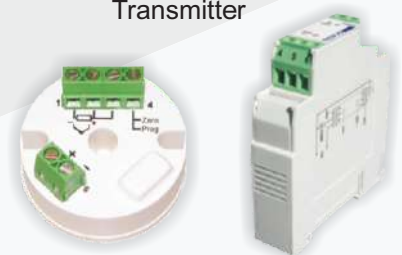
TEMPERATURE

Controller

PID Controller

Scanner

Transmitter



Eureka...Sensing temperature since 1982...



ControlTech Automation

PORTABLE TDS METER-111



Range : 0 to 1999 PPM, 0 TO 19.99 PPT
 Accuracy : $\pm 1\%$ of F.S.
 Resolution : 1 PPM
 Sensor : 1.0CC Cell (Dip type)
 Display : 3 1/2 digits LCD
 Power : One 9 V Battery
 (Duracell 6LR61 or equivalent)
 Dimensions : 55 (max) x 92 x 195 (H x W x D)

PORTABLE TDS METER-112



Range : 0 to 1999 μ S, 0 TO 19.99 ms
 Accuracy : $\pm 1\%$ of F.S.
 Resolution : 1 μ S
 Sensor : 1.0CC Cell (Dip type)
 Display : 3 1/2 digits LCD
 Power : One 9 V Battery
 (Duracell 6LR61 or equivalent)
 Dimensions : 55 (max) x 92 x 195 (H x W x D)

PORTABLE TDS + CONDUCTIVITY METER-113



Range : TDS : 0 to 1999 PPM, 0 TO 19.99 PPT
 Conductivity 0 to 1999 μ S, 0 to 19.99ms
 Accuracy : $\pm 1\%$ of F.S.
 Resolution : TDS :1 PPM Conductivity 1 μ S
 Sensor : 1.0CC Cell (Dip type)
 Display : 3 1/2 digits LCD
 Power : One 9 V Battery
 (Duracell 6LR61 or equivalent)
 Dimensions : 55 (max) x 92 x 195 (H x W x D)

DIGITAL TDS METER-114



Range : 0 to 1999 PPM, 0 TO 19.99 PPT
 Accuracy : $\pm 1\%$ of F.S.
 Resolution : 1 PPM
 Sensor : 1.0CC Cell (Dip type)
 Display : 3 1/2 digits LCD
 Power : One 9 V Battery
 (Duracell 6LR61 or equivalent)
 Dimensions : 55 (max) x 92 x 195 (H x W x D)

DIGITAL CONDUCTIVITY METER-115



Conductivity: 0 to 20 Mho or ms
 Range
 Accuracy : $\pm 1\%$ of F.S. in all ranges ± 1 count
 Conductivity: Approx. 1.0 Cell Constant
 Cell
 Cell Const. : 0.9 to 1.1
 Compensation
 Display : 3 1/2 digits LCD with auto polarity
 Power : 230 Vac $\pm 10\%$, 50Hz
 Dimensions : 80 (max) x 238 x 205 (H x W x D)
 (mm)

PORTABLE PH METER-211



Range : 0 to 14 pH
 Accuracy : $\pm 1\%$ of F.S.
 Resolution : 0.01 pH
 Repeatability : 0.01 pH ± 1 Digit
 Standardization: 2 Point Calibration
 Temp. : 0 to 100° C - Manual
 Compensation
 Display : 3 1/2 digits LCD
 Power : One 9 V Battery
 (Duracell 6LR61 or equivalent)
 Dimensions : 55 (max) x 92 x 195 (H x W x D)

PORTABLE ATC PH METER-212



Range : 0 to 14 pH
 Accuracy : $\pm 1\%$ of F.S.
 Resolution : 0.01 pH
 Repeatability : 0.01 pH ± 1 Digit
 Standardization: 2 Point Calibration
 Temp. : 0 to 99.99° C - Auto using PT-100
 Compensation
 Display : 3 1/2 digits LCD
 Power : One 9 V Battery
 (Duracell 6LR61 or equivalent)
 Dimensions : 55 (max) x 92 x 195 (H x W x D)

DIGITAL PH METER-213



pH Range : 0 to 14 pH
 Mv Range : 0 to 1999 ± 1 mv
 Temp. Range : 0 to 100° C
 Resolution : 0.01 pH, 1 mv
 Repeatability : 0.01 pH ± 1 Digit, 1 mv ± 1 Digit
 Standardization: 2 Point Calibration
 Temp. : 0 to 100 Degree - Manual
 Compensation
 Display : 3 1/2 digits LCD with auto Polarity
 Power : 230 Vac $\pm 10\%$, 50 Hz
 Dimensions : 80 (max) x 238 x 205 (H x W x D)

DIGITAL ATC PH METER-214



pH Range : 0 to 14 pH
 Mv Range : 0 to 1999 ± 1 mv
 Temp. Range : 0 to 100° C
 Resolution : 0.01 pH, 1 mv
 Repeatability : 0.01 pH ± 1 Digit, 1 mv ± 1 Digit
 Standardization: 2 Point Calibration
 Temp. : 0 to 100 Degree - Automatic
 Compensation as well as Manual
 Display : 3 1/2 digits LCD with auto Polarity
 Power : 230 Vac $\pm 10\%$, 50 Hz
 Dimensions : 80 (max) x 238 x 205 (H x W x D)

MICROCONTROLLER PH METER-215



pH Range : 0 to 14 pH
 Mv Range : 0 to 1999 ± 1 mv
 Temp. Range : 0 to 100° C
 Resolution : 0.01 pH, 1 mv, 0.1 Degree
 Repeatability : 0.01 pH ± 1 Digit, 1 mv ± 1 Digit
 Standardization: 2 or 3 Point Calibration
 Temp. : 0 to 100 Degree - Automatic
 Compensation as well as Manual Mode
 Display : Two 3 1/2 digits LCD for pH & Temp.
 Power : 230 Vac $\pm 10\%$, 50 Hz
 Dimensions : 110 (max) x 225 x 125 (H x W x D)



ControlTech Automation

MICRO CONTROLLER PH METER-216



pH Range : 0 to 14 pH
 Mv Range : 0 to 1999 ± 1 mv
 Temp. Range : 0 to 100° C
 Resolution : 0.01 pH, 1 mv, 0.1 Degree
 Repeatability : 0.01 pH ± 1 Digit, 1 mv ± 1 Digit
 Standardization : 2 or 3 Point Calibration
 Temp. : 0 to 100 Degree - Automatic
 Compensation : as well as Manual Mode
 Display : 20x4 Alphanumeric LCD Display
 Power : 230 Vac ± 10%, 50 Hz
 Dimensions : 80 (max) x 238 x 205 (H x W x D)

MICRO CONTROLLER PH METER-217



pH Range : 0 to 14 pH
 Mv Range : 0 to 1999 ± 1 mv
 Temp. Range : 0 to 100° C
 Resolution : 0.01 pH, 1 mv, 0.1 Degree
 Repeatability : 0.005 pH ± 1 Digit, 1 mv ± 1 Digit
 Standardization : 2 or 3 Point Calibration
 Temp. : 0 to 100 Degree - Automatic
 Compensation : as well as Manual Mode
 Display : 20x4 Alphanumeric LCD Display
 Power : 230 Vac ± 10%, 50 Hz
 Dimensions : 80 (max) x 238 x 205 (H x W x D)

WATER ANALYSIS KIT 1001



Includes pH, MV, Temperature, Conductivity, TDS, Dissolved Oxygen Meters

WATER ANALYSIS KIT 1002

Includes pH, MV, Temperature, Conductivity, TDS, Dissolved Oxygen Colory, Turbidity Meters

ONLINE PH METER



pH Range : 0 to 14 pH
 Accuracy : ± 1 % of F.S.
 Temp. Range : 0° C
 Resolution : pH : 0.01 pH
 Repeatability : 0.01 pH ± 1 Digit,
 Standardization : 2 or 3 Point Calibration
 Temp. Sensing : PT-100 Temperature Probe
 Temp. : 0-99.9° C Automatic
 Compensation : as well as Manual Mode
 Display : Two 3 ½ Digits LED For pH & Temp.
 Power : 230 Vac ± 10%, 50 Hz
 Set Value : 2 Set Values along with hysteresis
 Output : 5 Amp 1 C/O, 1 Relay/2 Relays
 Dimensions : 96 (max) x 96 x 130 (H x W x D)

DIGITAL COLORY METER-411 & 411E



Filters & : 8 Filters (411), 5 Filters (411E)
 Wavelength : - 400 to 700 nm
 Light Source : Latest LED Technology
 Detector : Photo Cell / Photo Diode
 Resolution : 1 % in %T mode & 0.01 in ABS mode
 Solution Vol. : 2 ml (minimum)
 Display : 2 ½ Digits LCD DPM directly
 Calibrated for %T & O.D.
 Power : 230 Vac ± 10%, 50 Hz
 Dimensions : 130 (max) x 150 x 275 (H x W x D)

MICRO CONTROLLER COLORY METER-412 & 412E



Filters & : 8 Filters (411), 5 Filters (411E)
 Wavelength : - 400 to 700 nm
 Light Source : Latest LED Technology
 Detector : Photo Cell / Photo Diode
 Resolution : 1% in %T mode & 0.01 in ABS mode
 Solution Vol. : 2 ml (minimum)
 Display : 3 ½ Digits LCD DPM
 Power : 230 Vac ± 10%, 50 Hz
 Dimensions : 130 (max) x 150 x 275 (H x W x D)

MICRO CONTROLLER TURBIDITY METER-512



NTU Range : 0-1, 0-10, 0-100, 0-500
 Accuracy : ± 2% of F.S. in 0-1 & 0-500 NTU Range
 ± 1% of F.S. in 0-10 & 0-100 NTU Range
 Light Source : Latest LED Technology
 Detector : Photo Cell / Photo Diode
 Reproducibility : Within 3% of F.S.
 Calibration : With Formazine std Solution
 Display : 20 x 4 Alphanumeric LCD Display
 Power : 230 Vac ± 10%, 50 Hz
 Dimensions : 130 (max) x 150 x 275 (H x W x D)

LEAK TEST APPERATUS



Body Material : S.S. 316
 Operation : Semi - Automatic
 Set - Up : Programmable - 1 to 999 sec
 Hold Time : Programmable - 1 to 9999 sec
 Vacuum Read : Pneumatic Gauge
 Display : 20 x 4 Alphanumeric LCD
 Desiccators : 150mm/200mm/300mm Dia.
 (Optional)
 Power : 230 Vac ± 10%, 50 Hz
 Dimensions : 180 (max) x 320 x 400(HxWxD)

Address : 403, Aspire Business Campus, opp. Rabari Colony
 BRTS Bus Stand, Amaraiwadi, Ahmedabad-380026. Gujarat.

Phone No. : Vipul Patel : 98985 99514
 Chirag Shah : 96382 26869

E-mail : sales@controltechautomation.net
Web : www.controltechautomation.net



ControlTech
Automation